

## 2004 Mobile Data Mounting Catalog

Law Enforcement / Public Safety Products



***Kodiak Mobile MFG. Inc.***

*"Creators of custom electronic environments..."*

**An ISO 9001 Certified Corporation**

# Table of Contents

## Product Guide

**Kodiak Mobile MFG. Inc.**

an ISO 9001 certified corporation

Line	Product	Page #
<b>Introduction</b>		
1	Quality Statement .....	1
2	Mission Statement .....	1
3	Standard Warranty .....	1
4	www.kodiakmobile.com .....	2
<b>Docking Stations</b>		
4	Panasonic CF27 .....	3
5	Panasonic CF28 .....	4
6	Panasonic CF29 .....	5
7	Panasonic CF18 .....	6
8	Panasonic CF25 .....	7
<b>Mounting Stations</b>		
10	Panasonic CF48 .....	7
11	Panasonic CF72 .....	8
12	Panasonic CF73 .....	8
13	Panasonic CF50 .....	9
14	Panasonic CF34 .....	9
15	Compaq EVO N610 .....	9
16	Dell Latitude D400 .....	9
17	Dell Latitude D505 .....	10
18	Dell Latitude D600 .....	10
19	Itronix Go Book II / III .....	10
20	Itronix IX300 Tablet PC .....	11
21	Toshiba Sattelite 1100 .....	11
19	Build-To-Specification Mount. ....	11
<b>Printer Mounts</b>		
20	Pentax PocketJet Series Mobile Printer .....	12
<b>Docking Accessories</b>		
21	LCD Supports for Docking Stations .....	12
22	LCD Supports for Mounting Stations .....	12
23	DC Adapters .....	12
24	Integrated GPS Solutions .....	13
25	Rear Port Adapter .....	13
26	Keyboard Light .....	13
27	Magnetic Card Readers .....	14
28	Smart Card Readers .....	14
<b>Product Index</b>		
29	Part Numbers .....	15
30	Replacement Parts List .....	16
<b>Contact Information</b>		
Corporate Headquarters:		
<b>Kodiak Mobile MFG. Inc.</b>		
131 South Weber Street		
Chandler, Arizona USA 85226		
480.496.6991 Voice		
480.496.6737 Fax		
877.9.KODIAK Toll Free		
info@kodiakmobile.com		
http://www.kodiakmobile.com		

# Introduction

## Quality System Statements

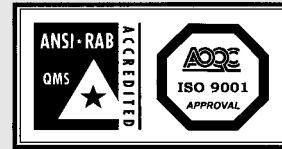
**Kodiak Mobile MFG. Inc.**

*an ISO 9001 certified corporation*

Kodiak Mobile provides mobile data communications solutions around the world. We specialize in mobile, rugged in-vehicle docking stations utilizing the latest docking station technology. Kodiak understands the critical nature of mobile data systems requirements and mission-critical hardware.

### ISO 9001:2000 QUALITY MANAGEMENT SYSTEM

Kodiak Mobile is dedicated to quality! We have taken the necessary steps to become one of the first companies in the United States to be ISO certified under the new ISO 9001 year 2000 standard. Our certification was awarded in July of 2001 and has been maintained ever since.



Our Quality Management Systems are undergoing continual improvement in effort to provide the best quality product and customer service possible.

### QUALITY POLICY

Kodiak Mobile MFG. Inc. monitors and generates continual product and quality management systems improvements in order to meet the critical requirements of our customers consistent with ISO 9001:2000 requirements and applicable statutory and regulatory requirements.

### MISSION STATEMENT

Kodiak Mobile MFG. Inc. develops trusting customers through mutual respect and integrity. Our creativity generates continual product and systems improvements in order to meet the critical requirements of our customers. Honest open communication stimulates a family atmosphere resulting in personal and corporate success as well as strategic alliances.

### STANDARD LIMITED WARRANTY

PRODUCT: Standard Docking & Mounting Stations

Kodiak Mobile MFG. Inc. will repair our docking station products with new or rebuilt parts, free of charge in the U.S.A. for three (3) years from the date of original purchase in the event of a defect in materials or workmanship. This warranty includes the metal case and internal power supply / port replicator circuitry, but excludes all other options or accessories, which are covered by the respective manufacturer of those options or accessories.

This warranty is extended solely to the original purchaser. A purchase receipt or other proof of date of original purchase and a Kodiak Sales SO# (number) will be required before warranty performance is rendered.

This warranty only covers failures due to defects in materials or workmanship which occur during normal use. It does not cover damage which occurs in shipment or failures which are caused by products not supplied by Kodiak, or failures which result from alteration, accident, misuse, introduction of liquid or other foreign matter into the unit, abuse, neglect, installation, maladjustment of consumer controls, improper maintenance, modification or service by anyone other than Kodiak Mobile MFG. Inc. or an authorized Kodiak Mobile MFG. Inc. Service Authorized Dealer, or damage that is attributable to acts of God.

Exclusions and Limits:

There are no other express warranties except as listed above.

Kodiak Mobile MFG. Inc. shall not be liable for loss of data or other incidental or consequential damages resulting from the use of this product, or arising out of any breach of this warranty. All express and implied warranties, including the warranties of merchantability and fitness for a particular purpose are limited to the applicable warranty period set forth above.

Kodiak would like to take a moment to introduce you to our award winning web site! This site provides you with a fast, simple avenue to keep up to date with our products and services. The Kodiak web site features our full line of docking and mounting stations as well as our on-line download section which offers users manuals, wiring instructions and data sheets. Please take a moment to visit [www.kodiakmobile.com](http://www.kodiakmobile.com)

# ***www.kodiakmobile.com***

## ***Company***

Take a virtual tour of our facility in Chandler, Arizona USA to learn more about us. This section also features details on our ISO 9001:2000 Quality Management System and our certification.

## ***Product / Technology***

Understand more about the technology and the applications for our products! Kodiak works with many different markets and offers solutions for every situation.

Find what your looking for in our full feature on-line catalog. We have our entire docking and mounting station catalog available in an easy to use indexed Adobe .pdf format, so you can save the entire catalog to your hard disk and take it with you!

## ***What's New!***

Kodiak updates our "What's New!" section monthly. This section features new product and product enhancements as well as current projects and future event schedules.

## ***Kodiak's Customer Registration Form***

Kodiak has an on-line customer registration form available. Registering your product with Kodiak enables us to keep you informed of product upgrades and enhancements as well as new accessories that become available. We encourage you to complete this form, and remember we keep all information collected on this site confidential and for internal use only!

## ***Information Request Form***

Our Information Request Form is a great way for you to gain knowledge of our products! Simply complete the form and click submit! One of our experienced customer service reps will send the information you requested, it's that easy!

## ***Download Section***

This section has proven valuable. We keep this section up to date with the latest product data, software drivers, and time saving software utilities. The list below is only a sample of what you will find available:

- Product Data Sheets
- Detailed Product Specifications
- Software Drivers
- Software Utilities

## ***Kodiak's InfoBase!***

Have questions about your docking station? Please visit the "Kodiak InfoBase". You will find a FAQ (Frequently Asked Questions) database that details common questions and answers about our products. The answer you are seeking may be answered fast and easy using this tool.

# Docking Stations

## Panasonic CF27 iDock

**Kodiak Mobile MFG. Inc.**

an ISO 9001 certified corporation



Kodiak's first-to-the-field technology can be found in this truly rugged CF27 "intelligent"® docking station. This unit is constructed of welded steel and features our internal port replicator and internal "intelligent"® power management circuitry. All functions can be controlled and monitored at the tactile membrane control panel located at the front of the docking station. Surge suppression, avalanche voltage protection, reverse voltage protection, emi filtering, transient voltage protection, low voltage monitoring, auto activation and shutdown, user controlled timed shutdown are all standard on this unit. This docking station conforms to MIL-STD 810E on vibration and impact and is Panasonic® Toughbook Tested.

Kodiak is a custom manufacturer and will create custom modifications to our products to better meet your requirements.

**BASE PART NUMBER: KDCF27**

### SPECIFICATIONS

#### PHYSICAL

Width:	11.750	Construction:	18g / 10g welded steel
Depth:	9.500	Finish:	Black powder coating
Height:	1.500	Mounting pattern:	4.250 x 2.000 & 4.000 x 2.000
Weight:	10.500	Key Lock:	Circular tube key
		Keyed alike:	Yes

#### CONTROL PANEL

Switch 1:	Master power	Switch 2:	AutoShutdown reset
Indicator 1:	Power LED (Green)	Indicator 2:	Docked LED (Green)
Indicator 3:	Low Volt LED (Red)	Indicator 4:	Shutdown warning LED (Red)

#### POWER SUPPLY (iDock)

Input voltage:	9v DC - 16v DC	Output voltage 1:	15.6v DC regulated for charging circuit
Output voltage 2:	12v DC regulated (for accessory)	Output voltage 3:	5v DC regulated (for accessory)
Output amps:	5A max	Surge suppression:	Yes
Auto shutdown:	30 min - 300 min (user configurable)	Power switch:	Tactile membrane switch
Input fused:	Yes	Output fused:	Yes
Reverse volt. protect:	Yes	Trans. volt protect:	Yes

#### PORT REPLICATOR:

Ports: 2 serial, parallel, keyboard, mouse, video out, usb, mic, spkr

#### CERTIFICATIONS:

Vibration testing: MIL-STD 810E 514.4 1.8  
Impact testing: MIL-STD 810E method 516  
Panasonic: Toughbook Tested

#### OPTIONS & ACCESSORIES:

Keyboard Light



Wireless Passthrough



LCD Support



Magnetic Card Readers



Integrated GPS





# Docking Stations

## Panasonic CF28 iDock

**Kodiak Mobile MFG. Inc.**

an ISO 9001 certified corporation



Kodiak's rugged CF28 intelligent docking station is based on our field proven docking station technology. This unit's time tested design has been serving the law enforcement industry since 1996 and has proven to be truly rugged. This unit is constructed of welded steel and features our internal port replicator and internal "intelligent" power management circuitry. All functions can be controlled and monitored at the tactile membrane control panel located at the front of the docking station. Surge suppression, avalanche voltage protection, reverse voltage protection, EMI filtering, transient voltage protection, low voltage monitoring, auto activation and shutdown, user controlled timed shutdown are all standard on this unit. This docking station conforms to MIL-STD 810E on vibration and impact and is Panasonic® Toughbook Tested.

Kodiak is a custom manufacturer and will create custom modifications to our products to better meet your requirements.

**BASE PART NUMBER: KDCF28**

**SPECIFICATIONS**

**PHYSICAL**

Width:	11.750	Construction:	18g / 10g welded steel
Depth:	9.500	Finish:	Black powder coating
Height:	1.500	Mounting pattern:	4.250 x 2.000 & 4.000 x 2.000
Weight:	10.500	Key Lock:	Circular tube key
		Keyed alike:	Yes

**CONTROL PANEL**

Switch 1:	Master power	Switch 2:	AutoShutdown reset
Indicator 1:	Power LED (Green)	Indicator 2:	Docked LED (Green)
Indicator 3:	Low Volt LED (Red)	Indicator 4:	Shutdown warning LED (Red)

**POWER SUPPLY (iDock)**

Input voltage:	9v DC - 16v DC	Output voltage 1:	15.6v DC regulated for charging circuit
Output voltage 2:	12v DC regulated (for accessory)	Output voltage 3:	5v DC regulated (for accessory)
Output amps:	5A max	Surge suppression:	Yes
Auto shutdown:	30 min - 300 min (user configurable)	Power switch:	Tactile membrane switch
Input fused:	Yes	Output fused:	Yes
Reverse volt. protect:	Yes	Trans. volt protect:	Yes

**PORT REPLICATOR:**

Ports: 2 serial, parallel, keyboard, mouse, video out, usb, mic, spkr

**CERTIFICATIONS:**

Vibration testing: MIL-STD 810E 514.4 1.8  
Impact testing: MIL-STD 810E method 516  
Panasonic: Toughbook Tested

**OPTIONS & ACCESSORIES:**

Keyboard Light



Wireless Passthrough



LCD Support



Magnetic Card Readers



Integrated GPS



# Docking Stations

## Panasonic CF29 iDock

**Kodiak Mobile MFG. Inc.**

*an ISO 9001 certified corporation*



Kodiak's field proven technology can be found in this truly rugged CF29 "intelligent"® docking station.

The CF29 docking station is based on the same design as our ever popular CF28 docking station. This design has been serving the law enforcement industry since 1996 and has been proven a tough, rugged design. The new CF29 iDock includes a new robust docking interface that is designed for the CF29's dual wireless pass-through cable assembly. This unit is constructed of welded steel and features our internal port replicator and internal "intelligent"® power management circuitry. All functions can be controlled and monitored at the tactile membrane control panel located at the front of the docking station. Surge suppression, avalanche voltage protection, reverse voltage protection, emi filtering, transient voltage protection, low voltage monitoring, auto activation and shutdown, user controlled timed shutdown are all standard on this unit. This docking station conforms to MIL-STD 810E on vibration and impact.

### NEW ACCESSORY!

Kodiak now offers the "Rear Port Adapter" for our CF28 and CF29 intelligent docking stations. See page 12 for details.



**BASE PART NUMBER: KDCF29**

### SPECIFICATIONS

#### PHYSICAL

Width:	11.750	Construction:	18g / 10g welded steel
Depth:	9.500	Finish:	Black powder coating
Height:	1.500	Mounting pattern:	4.250 x 2.000 & 4.000 x 2.000
Weight:	10.500	Key Lock:	Circular tube key
		Keyed alike:	Yes

#### CONTROL PANEL

Switch 1:	Master power	Switch 2:	AutoShutdown reset
Indicator 1:	Power LED (Green)	Indicator 2:	Docked LED (Green)
Indicator 3:	Low Volt LED (Red)	Indicator 4:	Shutdown warning LED (Red)

#### POWER SUPPLY (iDock)

Input voltage:	9v DC - 16v DC	Output voltage 1:	15.6v DC regulated for charging circuit
Output voltage 2:	12v DC regulated (for accessory)	Output voltage 3:	5v DC regulated (for accessory)
Output amps:	5A max	Surge suppression:	Yes
Auto shutdown:	30 min - 300 min (user configurable)	Power switch:	Tactile membrane switch
Input fused:	Yes	Output fused:	Yes
Reverse volt. protect:	Yes	Trans. volt protect:	Yes

#### PORT REPLICATOR:

Ports: 2 serial, parallel, keyboard, mouse, video out, usb, mic, spkr

#### CERTIFICATIONS:

Vibration testing: MIL-STD 810E 514.4 1.8  
 Impact testing: MIL-STD 810E method 516  
 Panasonic: Toughbook Testing Pending  
 UL: 60950-LPS Pending

### OPTIONS & ACCESSORIES:

Keyboard Light



Wireless Passthrough



LCD Support



Magnetic Card Readers



Integrated GPS



# Docking Stations

## Panasonic CF18 iDock

**Kodiak Mobile MFG. Inc.**

*an ISO 9001 certified corporation*



**Available September 2004.**

Kodiak's proven technology can be found in this truly rugged CF18 docking station. This unit is constructed of 18 and 10 gauge steel. It features an internal port replicator and our revolutionary intelligent power supply\*. Use this unit as a horizontal docking station or in the vertical position for the Panasonic CF18 tablet configuration. This docking station conforms to MIL-STD 810 on vibration and impact.

Kodiak is a custom manufacturer and will create custom modifications to our products to better meet your requirements.

\* Internal iDock power supply is optional, standard unit must use an external DC-DC adapter

**BASE PART NUMBER: KDCF18**

**SPECIFICATIONS**

**PHYSICAL**

Width:	10.250	Construction:	18g & 10g Steel
Depth:	10.430	Finish:	Black powder coating, Zinc Plating
Height:	1.630 nominal	Mounting pattern:	4.250 x 2.000
Weight:	7.650 lbs	Key Lock:	Circular tube lock
		Keyed alike:	Yes

**POWER SUPPLY**

Input voltage:	9v DC - 16v DC	Output voltage:	15.6v DC regulated for charging circuit
Output amps:	5A max	Surge suppression:	Yes
Input fused:	Yes	Control:	Tactile Membrane Control Panel
Reverse volt. protect:	Yes	Output fused:	Yes

**PORT REPLICATOR:**

Serial (RS232):	2	9 Pin D-Sub
USB	4	USB Type B
Audio Out (Stereo):	1	3.5mm Mini-Jack
Microphone In:	1	3.5mm Mini-Jack
Mouse / Keyboard	1	6 Pin Mini-DIN

**CERTIFICATIONS:**

Vibration testing:	MIL-STD 810E 514.4 1.8
Impact testing:	MIL-STD 810E method 516

**OPTIONS & ACCESSORIES:**

Keyboard Light



Wireless Passthrough



LCD Support



Magnetic Card Readers



Integrated GPS





# Docking Stations

## Panasonic CF25

**Kodiak Mobile MFG. Inc.**

*an ISO 9001 certified corporation*

Kodiak's CF25 docking station is still available. This proven docking station features our internal port replicator and our internal power supply.



Docking is achieved through the use of a MIL-SPEC connector that was designed for impact, vibration and the high insertion rates associated with a mobile environment. The bottom of the laptop interface integrates a shock absorbing, non-slip foam pad for additional protection. This docking station conforms to MIL-STD 810E on vibration and impact and is Panasonic® Toughbook Tested.

Kodiak is a custom manufacturer and will create custom modifications to our products to better meet your requirements.

**BASE PART NUMBER: KDCF25**

### SPECIFICATIONS

#### POWER SUPPLY

Input voltage:	9v DC - 16v DC	Output voltage 1:	15.6v DC regulated for charging circuit
Output voltage 2:	12v DC regulated (for accessory)	Output voltage 3:	5v DC regulated (for accessory)
Output amps:	5A max	Surge suppression:	Yes
Input fused:	Yes	Power switch:	On-Off with LED indicator
Reverse volt. protect:	Yes	Output fused:	Yes

#### PORT REPLICATOR:

Ports: serial, parallel, keyboard, mouse

#### CERTIFICATIONS:

Vibration testing: MIL-STD 810E 514.4 1.8  
 Impact testing: MIL-STD 810E method 516  
 Panasonic: Toughbook Tested

# Mounting Stations

These computer mounts are specifically designed to function with the respective notebook computer. They are all constructed of 18g and 10g steel and are powder coated anti-glare black. Vibration isolators are used to dampen vibration and reduce the possibility to damage to the notebook's hard drive. The Kodiak Mounting Station typically does not obstruct any of the ports or bays on the notebook computer. The notebook computer is locked into place using a tubular key lock for strong security and are keyed the same as our intelligent docking stations for fleet uniformity.

Kodiak's DC-DC adapter and LED indicator switch conveniently mount to the bottom of the Mounting Station, making it a totally self sufficient computer mount. Additionally, Kodiak has several options available for this mount such as screen supports, keyboard lights and magnetic card readers.

Kodiak is a custom manufacturer and will design and build a Mounting Station for any notebook computer.

### PANASONIC CF-48 TOUGHBOOK



### SPECIFICATIONS

#### PHYSICAL DIMENSIONS

Width:	12.200
Depth:	10.400
Height:	1.800 nominal
Weight:	5.700 lbs

#### VIBRATION ISOLATION

Vibration control method 40 durometer isolators x 4

#### CERTIFICATIONS:

Vibration testing: MIL-STD 810E 514.4 1.8  
 Impact testing: MIL-STD 810E method 516

Keyboard Light



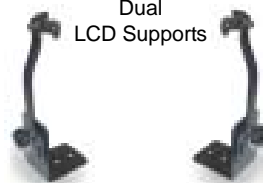
DC Adapter



LCD Support



Dual LCD Supports



Magnetic Card Readers



# Mounting Stations (cont.)

**Kodiak Mobile MFG. Inc.**

*an ISO 9001 certified corporation*

## PANASONIC CF-72 TOUGHBOOK



Shown with optional LCD support

### SPECIFICATIONS

#### PHYSICAL DIMENSIONS

Width: 11.900  
 Depth: 11.000  
 Height: 1.800 nominal  
 Weight: 5.700 lbs

#### VIBRATION ISOLATION

Vibration control method 40 durometer isolators x 4

#### CERTIFICATIONS:

Vibration testing: MIL-STD 810E 514.4 1.8  
 Impact testing: MIL-STD 810E method 516

Keyboard Light



DC Adapter



LCD Support



Dual LCD Supports



Magnetic Card Readers



## PANASONIC CF-73 TOUGHBOOK



Shown with optional Dual LCD supports

### SPECIFICATIONS

#### PHYSICAL DIMENSIONS

Width: 11.830  
 Depth: 11.100  
 Height: 1.700 nominal  
 Weight: 5.300 lbs

#### VIBRATION ISOLATION

Vibration control method 40 durometer isolators x 4

#### CERTIFICATIONS:

Vibration testing: MIL-STD 810E 514.4 1.8  
 Impact testing: MIL-STD 810E method 516

Keyboard Light



DC Adapter



LCD Support



Dual LCD Supports



Magnetic Card Readers



## PANASONIC CF-50 TOUGHBOOK



### SPECIFICATIONS

#### PHYSICAL DIMENSIONS

Width: 12.930  
 Depth: 11.123  
 Height: 1.600 nominal  
 Weight: 5.800 lbs

#### VIBRATION ISOLATION

Vibration control method 40 durometer isolators x 4

#### CERTIFICATIONS:

Vibration testing: MIL-STD 810E 514.4 1.8  
 Impact testing: MIL-STD 810E method 516

Keyboard Light



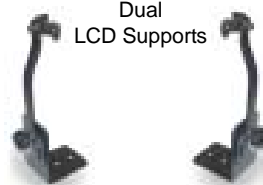
DC Adapter



LCD Support



Dual LCD Supports



Magnetic Card Readers



# Mounting Stations (cont.)

**Kodiak Mobile MFG. Inc.**

*an ISO 9001 certified corporation*

## PANASONIC CF-34 TOUGHBOOK



### SPECIFICATIONS

#### PHYSICAL DIMENSIONS

Width: 9.100  
 Depth: 7.670  
 Height: 1.500 nominal  
 Weight: 3.45 lbs

#### VIBRATION ISOLATION

Vibration control method 40 durometer isolators x 4

#### CERTIFICATIONS:

Vibration testing: MIL-STD 810E 514.4 1.8  
 Impact testing: MIL-STD 810E method 516

Keyboard Light



DC Adapter



LCD Support



Dual LCD Supports



Magnetic Card Readers



## COMPAQ EVO N610



### SPECIFICATIONS

#### PHYSICAL DIMENSIONS

Width: 12.340  
 Depth: 9.960  
 Height: 1.700 nominal  
 Weight: 5.500 lbs

#### VIBRATION ISOLATION

Vibration control method 40 durometer isolators x 4

#### CERTIFICATIONS:

Vibration testing: MIL-STD 810E 514.4 1.8  
 Impact testing: MIL-STD 810E method 516

Keyboard Light



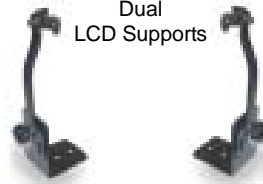
DC Adapter



LCD Support



Dual LCD Supports



Magnetic Card Readers



## DELL LATITUDE D400



### SPECIFICATIONS

#### PHYSICAL DIMENSIONS

Width: 11.560  
 Depth: 9.780  
 Height: 1.600 nominal  
 Weight: 5.100 lbs

#### VIBRATION ISOLATION

Vibration control method 40 durometer isolators x 4

#### CERTIFICATIONS:

Vibration testing: MIL-STD 810E 514.4 1.8  
 Impact testing: MIL-STD 810E method 516

Keyboard Light



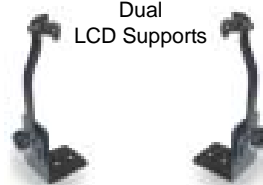
DC Adapter



LCD Support



Dual LCD Supports



Magnetic Card Readers



# Mounting Stations (cont.)

**Kodiak Mobile MFG. Inc.**

*an ISO 9001 certified corporation*

## DELL LATITUDE D505



This unit is available for both 14.1" and 15" display sizes

Shown with optional Dual LCD supports

### SPECIFICATIONS

#### PHYSICAL DIMENSIONS

	14.1" LCD	15" LCD
Width:	12.425	13.244
Depth:	10.370	10.914
Height:	1.600 nominal	1.600 nominal
Weight:	5.900 lbs	6.400 lbs

#### VIBRATION ISOLATION

Vibration control method 40 durometer isolators x 4

#### CERTIFICATIONS:

Vibration testing: MIL-STD 810E 514.4 1.8  
Impact testing: MIL-STD 810E method 516

Keyboard Light



DC Adapter



LCD Support



Dual LCD Supports



Magnetic Card Readers



## DELL LATITUDE D600



Shown with optional Dual LCD supports

### SPECIFICATIONS

#### PHYSICAL DIMENSIONS

Width:	12.425
Depth:	10.370
Height:	1.600 nominal
Weight:	5.900 lbs

#### VIBRATION ISOLATION

Vibration control method 40 durometer isolators x 4

#### CERTIFICATIONS:

Vibration testing: MIL-STD 810E 514.4 1.8  
Impact testing: MIL-STD 810E method 516

Keyboard Light



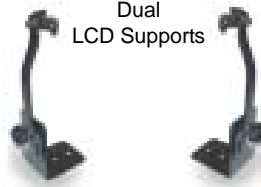
DC Adapter



LCD Support



Dual LCD Supports



Magnetic Card Readers



## ITRONIX GO BOOK II / III

PHOTO NOT AVAILABLE YET

### SPECIFICATIONS

#### PHYSICAL DIMENSIONS

Width:	12.500
Depth:	10.350
Height:	1.700 Approx.
Weight:	5.700 Approx.

#### VIBRATION ISOLATION

Vibration control method 40 durometer isolators x 4

#### CERTIFICATIONS:

Vibration testing: MIL-STD 810E 514.4 1.8  
Impact testing: MIL-STD 810E method 516

Keyboard Light



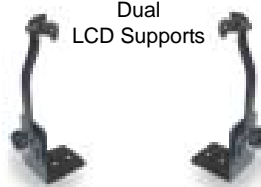
DC Adapter



LCD Support



Dual LCD Supports



Magnetic Card Readers



# Mounting Stations (cont.)

**Kodiak Mobile MFG. Inc.**

*an ISO 9001 certified corporation*

## ITRONIX IX300 TABLET PC



### SPECIFICATIONS

#### PHYSICAL DIMENSIONS

Width: 12.100  
 Depth: 2.720  
 Height: 7.760  
 Weight: 5.000 lbs

#### VIBRATION ISOLATION

Vibration control method 40 durometer isolators x 4

#### CERTIFICATIONS:

Vibration testing: MIL-STD 810E 514.4 1.8  
 Impact testing: MIL-STD 810E method 516

Keyboard Light



DC Adapter



LCD Support



Dual LCD Supports



Magnetic Card Readers



## TOSHIBA SATELLITE 1100

**NO PHOTO**

### SPECIFICATIONS

#### PHYSICAL DIMENSIONS

Width: 12.425  
 Depth: 10.370  
 Height: 1.600 nominal  
 Weight: 5.900 lbs

#### VIBRATION ISOLATION

Vibration control method 40 durometer isolators x 4

#### CERTIFICATIONS:

Vibration testing: MIL-STD 810E 514.4 1.8  
 Impact testing: MIL-STD 810E method 516

Keyboard Light



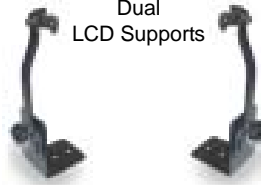
DC Adapter



LCD Support



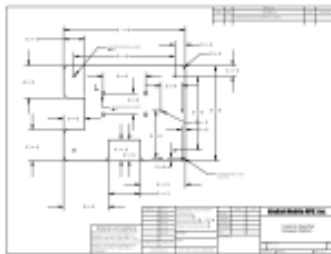
Dual LCD Supports



Magnetic Card Readers



## BUILD-TO-SPEC



Kodiak will design and build Mounting Stations for any notebook computer. Call customer service for details.

### SPECIFICATIONS

#### PHYSICAL DIMENSIONS

Width: Custom  
 Depth: Custom  
 Height: 1.700 Approx.  
 Weight: 5.500 Approx.

#### VIBRATION ISOLATION

Vibration control method 40 durometer isolators x 4

#### CERTIFICATIONS:

Vibration testing: MIL-STD 810E 514.4 1.8  
 Impact testing: MIL-STD 810E method 516

Keyboard Light

DC Adapter

LCD Support

Dual LCD Supports

Magnetic Card Readers



# Printer Mounts

## Pentax PocketJet Series

**Kodiak Mobile MFG. Inc.**

*an ISO 9001 certified corporation*



This mount was designed for use with the Pentax PocketJet series mobile printers. It allows the user the ability to utilize either roll paper or cut-sheet depending on user preference.

Roll paper is mounted behind the printer in the paper enclosure. This enclosure is also designed to provide additional protection from dirt, spills, and exposure to direct sunlight.

The "Fast Release" design allows rapid docking and undocking of the printer for printing outside of the vehicle. New to this model is a printer cable strain relief tab that now comes as a standard feature.

This mount is sufficiently compact that it may be mounted inside the glove compartment of many vehicles, or it may be console, pedestal or direct mounted anywhere in the vehicle.

### MOUNTING

Pedestal:	Yes
Direct:	Yes
Console:	Yes
Trunk:	Yes
Prisoner cage:	Yes
Glove box:	Most public safety vehicles

**BASE PART NUMBER: KPM3Q**

### SPECIFICATIONS

#### PHYSICAL

Width:	10.060	Construction:	18g welded steel
Depth:	5.250	Finish:	Black powder coating
Height:	3.250	Mounting pattern:	12 hole mounting array on bottom (10-32) 2 hole mounting array on back (.250)
Weight:	4.250 with roll-paper installed		

# LCD Supports



These LCD supports were designed for use with the Kodiak CF27, CF28, and CF29 intelligent docking stations and all Kodiak Mounting Stations.

This unit can be rapidly installed on most CF27's and all CF28 & CF29 rugged docking stations and all models of mounting stations using the supplied hardware.

**PART NUMBERS:**  
**DOCKING STATIONS:**  
 CF27: ..... **BB028**  
 CF28: ..... **BB028A**  
 CF29: ..... **BB028A**

**MOUNTING STATIONS:**  
 SINGLE: ..... **BB029**  
 DUAL: ..... **BB029A**

### SPECIFICATIONS

#### PHYSICAL

Material:	Aluminum
Finish:	Black powder coating
Application:	Kodiak Docking & Mounting Stations
Mounting Hardware:	(2) 8-32 SHCS Grade 8

# DC Adapter

## Panasonic Toughbooks



This DC-DC adapter is designed for use with the Panasonic Toughbook line of notebook computers. We have designed this power supply after our field proven docking station power supply. The unit mounts to all Kodiak Mounting Stations making them a self-sufficient powered computer mount. Comes complete with ON-OFF LED rocker switch, power cables and fuses.

**BASE PART NUMBER: CC004**

### SPECIFICATIONS

#### PHYSICAL

Material:	Steel
Finish:	Black powder coating
Application:	Panasonic Toughbook notebook computers
Charging Voltage:	15.8v DC

# Integrated GPS

## Powerful 12-Channel GPS Engine with WAAS

**Kodiak Mobile MFG. Inc.**

*an ISO 9001 certified corporation*



Kodiak offers this internal GPS system for a number of mobile applications including; car navigation, wireless communications, marine navigation, mapping and more. Because it's WAAS capable, this sensor can provide position accuracy of less than 3 meters without the use of an external DGPS beacon receiver. This sensor also offers EMI/RFI performance that is designed for use with mobile computing devices and wireless communication equipment.

### SPECIFICATIONS

<b>Receiver:</b>	WAAS enabled; 12 parallel channel GPS receiver continuously tracks and uses up to 12 satellites to compute and update your position.
<b>Acquisition Times:*</b>	
<b>Reacquisition:</b>	Less than 2 seconds
<b>Warm:</b>	Approximately 15 seconds
<b>Cold:</b>	Approximately 45 seconds
<b>Update Rate:</b>	1 to 900 seconds between updates; programmable in 1 second increments.
<b>GPS Accuracy:</b>	
<b>Position:</b>	<15 meters, 95% typical**
<b>Velocity:</b>	0.1 knot RMS steady state
<b>DGPS (USCG) accuracy:</b>	
<b>Position:</b>	3-5 meters, 95% typical
<b>Velocity:</b>	0.1 knot RMS steady state
<b>DGPS (WAAS) accuracy:</b>	
<b>Position:</b>	<3 meters, 95% typical
<b>Velocity:</b>	0.1 knot RMS steady state
<b>Dynamics:</b>	999 knot, 6g's
<b>Map Datums:</b>	108 predefined, 1 user
<b>Serial Interface:</b>	True RS-232 output, asynchronous serial input compatible with RS-232 or TTL voltage levels, RS-232 polarity. Baud rates: 300/600/1200/2400/4800/9600/19200/38400.
<b>Serial Format:</b>	Selectable between NMEA 0183 v2.00, NMEA 0183 v3.00, Garmin binary formats.

\* Warm = all data known. Cold = position, time and almanac known.

\*\* Subject to accuracy degradation to 100m 2DRMS under the U.S. Department of Defence imposed Selective Availability Program.

## Rear Port Adapter

### Panasonic CF28, CF29 iDocks

Kodiak now offers the Rear Port Adapter for our Panasonic CF28 and CF29 docking stations. This accessory pivots the port replicator ports 90° for a conversion from "out the bottom" to "out the back" to allow trunk or low clearance mounting.



Standard port configuration.  
"Out the Bottom"

With the Rear Port Adapter installed.  
"Out the back"



**BASE PART NUMBER: BB031**

## Keyboard Light

### Flexible gooseneck



This flexible gooseneck keyboard light is available for all of our docking stations. Kodiak manufactures an integrated mount specifically for this light to ensure easy, rapid mounting. This lamp comes complete with a 2 pin MTA connector that plugs directly into the power supply of the docking station completely eliminating any time consuming installation wiring.

Red or white light filter is included.

**BASE PART NUMBER: CC010**

# Magnetic Card Readers & Mounts

## External Reader

**Kodiak Mobile MFG. Inc.**

*an ISO 9001 certified corporation*



Kodiak has designed and built this magnetic card reader mount for all iDock and mounting stations. The powder coated mount easily mounts to the passenger side of all Kodiak docking stations. This mount can be added in the future or at the time of purchase.

The magnetic card reader is three track and is available in either keyboard data, RS232, or USB protocols. All Kodiak docking stations offer internal access for both USB and keyboard data.

When using a Kodiak docking station the installation is plug and play, there is no drilling or wiring.

**BASE PART NUMBER: (Dock Part Number) -M**

### SPECIFICATIONS

#### SPECIFICATION:

Magnetic Card Standard: ISO 8711 (read only), triple tracks  
USB: Compliant with USB V1.1 Support Low Speed (1.5 Mbps) and Full speed (12 Mbps)  
OS: Microsoft Windows 98 (2nd Edition), ME, 2000, XP  
Libraries: DLL and OCX for Windows

#### FEATURES:

Reads up to three tracks of information with a single swipe in either direction. Its length makes it exceptionally tolerant of bent or otherwise imperfect cards. Both beeper and LED indicators signal a successful read. This is a fully intelligent swipe reader that can be programmed to divide, rearrange, edit, and validate fields of magnetic card data. It automatically distinguishes between AAMVA and CA DMV formats.

# Magnetic / Smart Card Reader

## Internal Reader



This internal magnetic card reader is available for the CF28 docking station at the time of purchase. The unit is mounted in the front of the docking station next to the tactile control panel. This unit is extremely clean and offers smart card technology as a standard feature.

**BASE PART NUMBER: (Dock Part Number) -M1**

### SPECIFICATIONS

#### SPECIFICATION:

Smart Card Standard: ISO 7816 T=0, T=1, EMV96 Level 1 (R/W Compliant)  
Magnetic Card Standard: ISO 8711 (read only), triple tracks  
USB: Compliant with USB V1.1 Support Low Speed (1.5 Mbps) and Full speed (12 Mbps)  
OS: Microsoft Windows 98 (2nd Edition), ME, 2000, XP  
Libraries: DLL and OCX for Windows

#### FEATURES:

- Hybrid smart/magnetic card reader
- On-board flash memory to upgrade firmware easily
- Operation responded by LED
- Plug and play installation for Microsoft Windows

# Index

## Part Numbers

**Kodiak Mobile MFG. Inc.**

an ISO 9001 certified corporation

Kodiak Number	Type	Description	Page No.
<b>PRODUCTS</b>			
<b>KODIAK CF25 DOCKING STATION</b>			
KDCF25	Docking Station	CF25 Docking Station - Standard .....	7
KDCF25-K	Docking Station	CF25 Docking Station - w/ keyboard light .....	7
<b>KODIAK CF27 INTELLIGENT DOCKING STATION</b>			
KDCF27	Docking Station	CF27 Docking Station - Standard .....	3
KDCF27-K	Docking Station	CF27 Docking Station - w/ keyboard light .....	3
KDCF27-KW	Docking Station	CF27 Docking Station - w/ keyboard light, wireless passthrough .....	3
KDCF27-W	Docking Station	CF27 Docking Station - w/ wireless passthrough .....	3
KDCF27-L	Docking Station	CF27 Docking Station - w/ LCD support .....	3
KDCF27-KL	Docking Station	CF27 Docking Station - w/ keyboard light, LCD support .....	3
KDCF27-KWL	Docking Station	CF27 Docking Station - w/ keyboard light, wireless passthrough, LCD support .....	3
KDCF27-WL	Docking Station	CF27 Docking Station - w/ wireless passthrough, LCD support .....	3
KDCF27-M	Docking Station	CF27 Docking Station - w/ magnetic card reader .....	3
KDCF27-WM	Docking Station	CF27 Docking Station - w/ wireless passthrough, magnetic card reader .....	3
KDCF27-WLM	Docking Station	CF27 Docking Station - w/ wireless passthrough, LCD support, magnetic card reader .....	3
KDCF27-WLGM	Docking Station	CF27 Docking Station - w/ wireless passthrough, LCD support, GPS, magnetic card reader .....	3
KDCF27-LM	Docking Station	CF27 Docking Station - w/ LCD support, magnetic card reader .....	3
KDCF27-GM	Docking Station	CF27 Docking Station - w/ GPS, magnetic card reader .....	3
KDCF27-G	Docking Station	CF27 Docking Station - w/ GPS .....	3
<b>KODIAK CF27 CONVERSION KITS</b>			
KUCF2728	Upgrade Kit	CF27 Upgrade Kit (upgrades CF27 docking station to CF28 docking station)	
KUCF2728A	Upgrade Kit	CF27 Upgrade Kit for accessory equipped unit	
<b>KODIAK CF28-CF29 INTELLIGENT DOCKING STATION</b>			
KDCF28	Docking Station	CF28 Docking Station - Standard .....	4-5
KDCF28-K	Docking Station	CF28 Docking Station - w/ keyboard light .....	4-5
KDCF28-KW	Docking Station	CF28 Docking Station - w/ keyboard light, wireless passthrough .....	4-5
KDCF28-W	Docking Station	CF28 Docking Station - w/ wireless passthrough .....	4-5
KDCF28-W2	Docking Station	CF29 Docking Station - w/dual wireless passthrough .....	4-5
KDCF28-L	Docking Station	CF28 Docking Station - w/ LCD support .....	4-5
KDCF28-KL	Docking Station	CF28 Docking Station - w/ keyboard light, LCD support .....	4-5
KDCF28-KWL	Docking Station	CF28 Docking Station - w/ keyboard light, wireless passthrough, LCD support .....	4-5
KDCF28-WL	Docking Station	CF28 Docking Station - w/ wireless passthrough, LCD support .....	4-5
KDCF287-M	Docking Station	CF28 Docking Station - w/ magnetic card reader .....	4-5
KDCF28-WM	Docking Station	CF28 Docking Station - w/ wireless passthrough, magnetic card reader .....	4-5
KDCF28-WLM	Docking Station	CF28 Docking Station - w/ wireless passthrough, LCD support, magnetic card reader .....	4-5
KDCF28-WLGM	Docking Station	CF28 Docking Station - w/ wireless passthrough, LCD support, GPS, magnetic card reader .....	4-5
KDCF28-LM	Docking Station	CF28 Docking Station - w/ LCD support, magnetic card reader .....	4-5
KDCF28-GM	Docking Station	CF28 Docking Station - w/ GPS, magnetic card reader .....	4-5
KDCF28-G	Docking Station	CF28 Docking Station - w/ GPS .....	4-5
<b>KODIAK CF18 DOCKING STATIONS</b>			
KDCF18	Docking Station	CF18 Docking Station - Standard .....	6
KDCF18-A	Docking Station	CF18 Docking Station - w/ internal power supply .....	6
KDCF18-L	Docking Station	CF18 Docking Station - w/ LCD Support .....	6
KDCF18-AL	Docking Station	CF18 Docking Station -w/ internal power supply, LCD Support .....	6
KDCF18-W	Docking Station	CF18 Docking Station - w/ wireless passthrough .....	6
KDCF18-W2	Docking Station	CF18 Docking Station - w/ dual wireless passthrough .....	6
KDCF18-AW	Docking Station	CF18 Docking Station - w/ internal power supply, wireless passthrough .....	6
<b>KODIAK CF48 MOUNTING STATION</b>			
KMCF48	Computer Mount	CF48 Mount - Standard .....	7
KMCF48-L	Computer Mount	CF48 Mount - w/ LCD support .....	7
KMCF48-A	Computer Mount	CF48 Mount - w/ power supply .....	7
KMCF48-K	Computer Mount	CF48 Mount - w/ keyboard light .....	7
KMCF48-LK	Computer Mount	CF48 Mount - w/LCD support and Keyboard light .....	7
KMCF48-AL	Computer Mount	CF48 Mount - w/ power supply, LCD support .....	7
KMCF48-ALK	Computer Mount	CF48 Mount - w/ power supply, LCD support, keyboard light .....	7
<b>KODIAK CF72 MOUNTING STATION</b>			
KMCF72	Computer Mount	CF72 Mount - Standard .....	8
KMCF72-L	Computer Mount	CF72 Mount - w/ LCD support .....	8
KMCF72-A	Computer Mount	CF72 Mount - w/ power supply .....	8
KMCF72-K	Computer Mount	CF72 Mount - w/ keyboard light .....	8
KMCF72-LK	Computer Mount	CF72 Mount - w/LCD support and Keyboard light .....	8
KMCF72-AL	Computer Mount	CF72 Mount - w/ power supply, LCD support .....	8
KMCF72-ALK	Computer Mount	CF72 Mount - w/ power supply, LCD support, keyboard light .....	8
<b>KODIAK CF73 MOUNTING STATION</b>			
KMCF73	Computer Mount	CF73 Mount - Standard .....	8
KMCF73-L	Computer Mount	CF73 Mount - w/ LCD support .....	8
KMCF73-A	Computer Mount	CF73 Mount - w/ power supply .....	8
KMCF73-K	Computer Mount	CF73 Mount - w/ keyboard light .....	8
KMCF73-LK	Computer Mount	CF73 Mount - w/LCD support and Keyboard light .....	8
KMCF73-AL	Computer Mount	CF73 Mount - w/ power supply, LCD support .....	8
KMCF73-ALK	Computer Mount	CF73 Mount - w/ power supply, LCD support, keyboard light .....	8

# Index

## Part Numbers

**Kodiak Mobile MFG. Inc.**

an ISO 9001 certified corporation

Kodiak Number	Type	Description	Page No.
<b>KODIAK CF50 MOUNTING STATION</b>			
KMCF50	Computer Mount	CF50 Mount - Standard .....	8
KMCF50-L	Computer Mount	CF50 Mount - w/ LCD support .....	8
KMCF50-A	Computer Mount	CF50 Mount - w/ power supply .....	8
KMCF50-K	Computer Mount	CF50 Mount - w/ keyboard light .....	8
KMCF50-LK	Computer Mount	CF50 Mount - w/ LCD support and Keyboard light .....	8
KMCF50-AL	Computer Mount	CF50 Mount - w/ power supply, LCD support .....	8
KMCF50-ALK	Computer Mount	CF50 Mount - w/ power supply, LCD support, keyboard light .....	8
<b>KODIAK CF34 MOUNTING STATION</b>			
KMCF34	Computer Mount	CF34 Mount - Standard .....	9
KMCF34-L	Computer Mount	CF34 Mount - w/ LCD support .....	9
KMCF34-K	Computer Mount	CF34 Mount - w/ keyboard light .....	9
KMCF34-LK	Computer Mount	CF34 Mount - w/ LCD support and Keyboard light .....	9
<b>KODIAK COMPAQ EVO N610 MOUNTING STATION</b>			
KMCEVO	Computer Mount	EVO Mount - Standard .....	9
KMCEVO-L	Computer Mount	EVO Mount - w/ LCD support .....	9
KMCEVO-K	Computer Mount	EVO Mount - w/ keyboard light .....	9
KMCEVO-LK	Computer Mount	EVO Mount - w/ LCD support and Keyboard light .....	9
<b>KODIAK DELL LATITUDE D400 MOUNTING STATION</b>			
KMD400	Computer Mount	D400 Mount - Standard .....	9
KMD400-L	Computer Mount	D400 Mount - w/ LCD support .....	9
KMD400-K	Computer Mount	D400 Mount - w/ Keyboard light .....	9
KMD400-LK	Computer Mount	D400 Mount - w/ LCD support and Keyboard light .....	9
<b>KODIAK DELL LATITUDE D505 MOUNTING STATION</b>			
KMD505-14	Computer Mount	D505 Mount - Standard 14.1" .....	10
KMD505-15	Computer Mount	D505 Mount - Standard 15" .....	10
KMD505-14-L	Computer Mount	D505 Mount - 14.1" w/ LCD support .....	10
KMD505-15-L	Computer Mount	D505 Mount - 15" w/ LCD support .....	10
KMD505-14-K	Computer Mount	D505 Mount - 14.1" w/ Keyboard light .....	10
KMD505-15-K	Computer Mount	D505 Mount - 15" w/ Keyboard light .....	10
KMD505-14-LK	Computer Mount	D505 Mount - 14.1" w/ LCD support and Keyboard light .....	10
KMD505-15-LK	Computer Mount	D505 Mount - 15" w/ LCD support and Keyboard light .....	10
<b>KODIAK DELL LATITUDE D600 MOUNTING STATION</b>			
KMD600	Computer Mount	D600 Mount - Standard .....	10
KMD600-L	Computer Mount	D600 Mount - w/ LCD support .....	10
KMD600-K	Computer Mount	D600 Mount - w/ Keyboard light .....	10
KMD600-LK	Computer Mount	D600 Mount - w/ LCD support and Keyboard light .....	10
<b>ITRONIX GO BOOK II / III MOUNTING STATION</b>			
KMIGBII	Computer Mount	Itronix Go Book II / III Mount - Standard .....	10
KMIGBII-L	Computer Mount	Itronix Go Book II / III Mount - w/ LCD Support .....	10
<b>ITRONIX IX300 TABLET PC MOUNTING STATION</b>			
KMIX300	Computer Mount	IX300 Mount - Standard .....	11
<b>TOSHIBA SATELLITE 1100 MOUNTING STATION</b>			
KMTS1100	Computer Mount	1100 Mount - Standard .....	11
KMTS1100-L	Computer Mount	1100 Mount w/ LCD Support .....	11
<b>KODIAK PRINTER ENCLOSURES</b>			
KPM3Q	Printer Mount	Pentax PocketJet Mount .....	12
<b>DOCKING STATION ACCESSORIES / OPTIONS</b>			
BB028	LCD Support	CF27 Dock LCD Support .....	9
BB028A	LCD Support	CF28, CF29 Dock LCD Support .....	9
BB029	LCD Support	Universal LCD Support (For Mounting Stations) .....	9
CC004	DC Adapter	Kodiak 15.3v DC-DC Adapter for Panasonic notebook computers (For Mounting Stations) .....	12
CC018	Power Harness	Crown Victoria wiring harness for CF27, CF28, and CF29 iDocks	
CC010	Keyboard Light	12" Flexible gooseneck keyboard light w/ red & white light filter .....	13
CC006	Serial Ports	S2 Docking Station option, adds two additional serial ports to CF27, CF28, and CF29 idocks	
CC006A	Serial Ports	S4 Docking Station option, adds four additional serial ports to CF27, CF28, and CF29 idocks	
CC013	Cable	Panasonic CF27, CF28, CF29, CF18 wireless modem passthrough cable assembly	
CC013A	Cable	Panasonic CF29, CF18 dual wireless passthrough cable assembly	
CC014	Cable	Kodiak GPS passthrough cable, SMB-SMB bulkhead 12"	
<b>ACCESSORY MOUNTS</b>			
MM012	Accy. Mount	CF27, CF28, CF29 Docking station keyboard light mount	
MM029	Accy. Mount	CF27, CF28, CF29 Docking station magnetic card reader mount	
MM062	Accy. Mount	CF27, CF28, CF29 Docking station keyboard light / magnetic card reader combo mount	





## ***Kodiak Mobile MFG. Inc.***

*"Creators of custom electronic environments..."*

Authorized Reseller:



### ***Kodiak Mobile MFG. Inc.***

131 South Weber Street • Chandler, Arizona USA 85226  
480.496.6991 Voice • 480.496.6737 Fax • 1.877.9.KODIAK  
<http://www.kodiakmobile.com> • [info@kodiakmobile.com](mailto:info@kodiakmobile.com)

An ISO 9001:2000 Certified Corporation • ANSI-RAB Registered: Registration No. 9707032